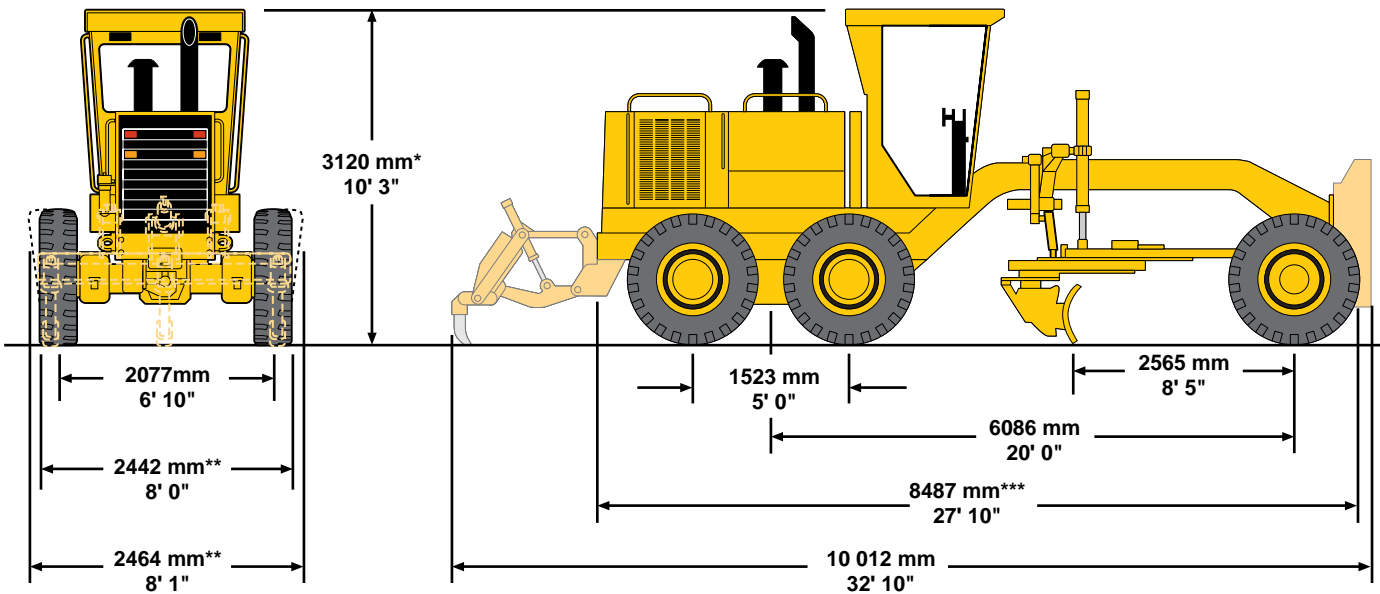


Dimensions

All dimensions are approximate.



Operating weights (approximate)

on front wheels	3922 kg	8647 lb
on rear wheels	9630 kg	21,231 lb
total machine	13 552 kg	29,878 lb

Operating weights based on standard machine configuration with 14.00-24 10PR (G-2) tires, full fuel tank, coolant, lubricants and operator.

Operating weights (approximate)

(Equipped with hydraulic side shift and tip, high profile ROPS cab and differential with lock/unlock)

on front wheels	4259 kg	9389 lb
on rear wheels	10 402 kg	22,932 lb
total machine	14 661 kg	32,321 lb

* with optional low-profile cab;

add 225 mm (8.9") for optional full height cab or canopy

** add 253 mm (10.0") for optional 17.5-25 tires

*** add 201 mm (7.9") for front pushplate,

add 117 mm (5") for rear hitch or

add 1324 mm (4'4") for rear-mounted ripper-scarifier

Note: Height without ROPS, exhaust, or other easily removed encumbrances 3.05 m (10'0").

Scarifier, and Ripper-Scarifier

Type	V-Type-Scarifier (mid-mounted)		Ripper-Scarifier (rear-mounted)	
Working width	1184 mm	46.6"	2300 mm	91"
Scarifying depth, maximum	292 mm	11.5"	411 mm	16.2"
Scarifier shank holders:				
number		11		9
spacing	116 mm	4.6"	267 mm	10.5"
Ripping depth, maximum		—	462 mm	18.2"
Ripper shank holders:				
number		—		5
spacing		—	533 mm	21"
Increase in machine length, beam raised		—	970 mm	38.2"
Penetration force*		—	8047 kg	17,740 lb
Pryout force		—	9281 kg	20,460 lb

*Varies with machine configuration.